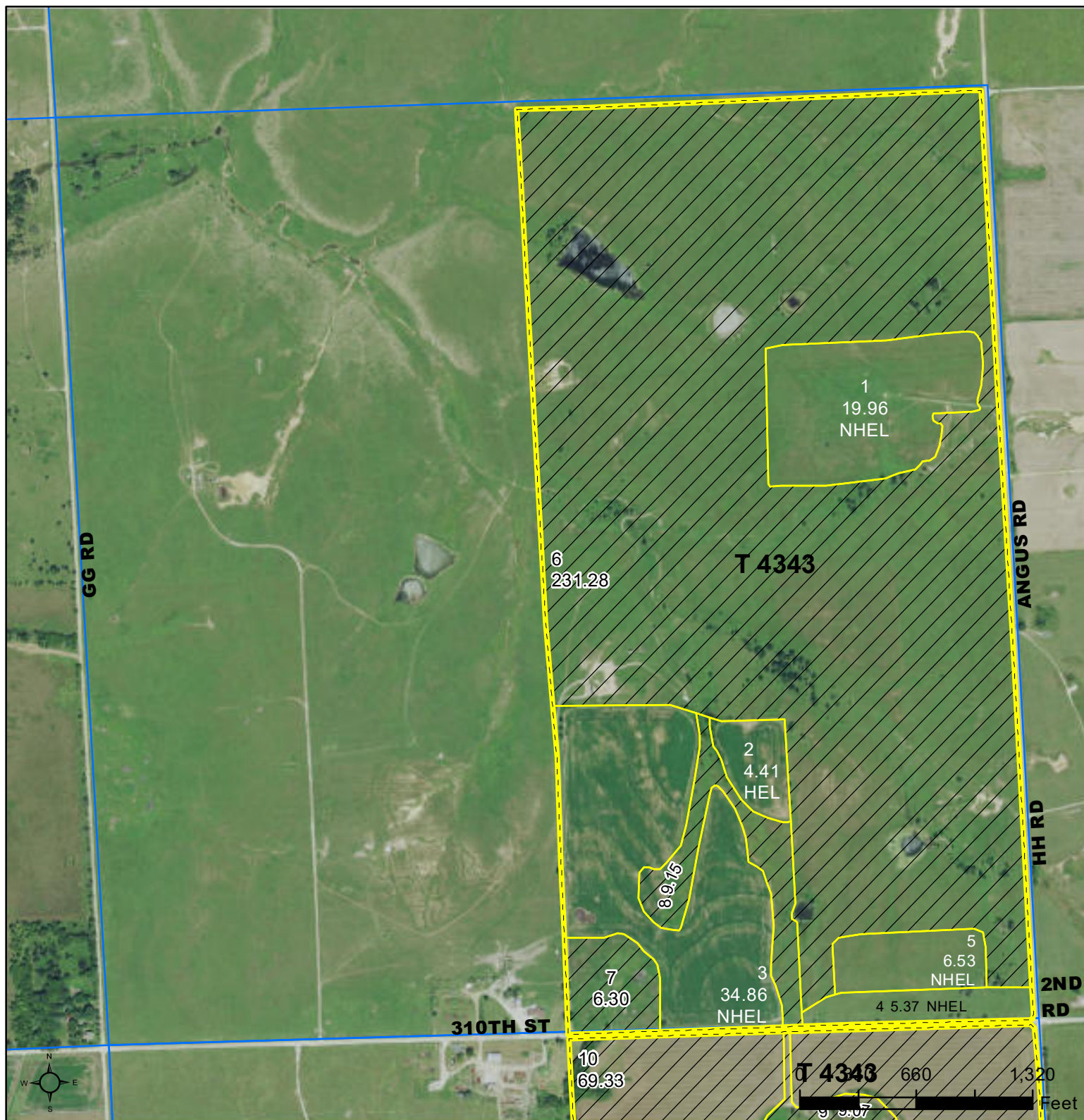




United States
Department of
Agriculture

Greenwood County, Kansas



Common Land Unit

- Non-Cropland
- Cropland

Wetland Determination Identifiers

- Restricted Use
- Limited Restrictions
- Exempt from Conservation Compliance Provisions

- Tract Boundary
- PLSS

Unless noted on field:

- | | |
|-----------------------------|--------------------------------|
| 1/ All Wheat HRW, NI, GR | 6/ Grass SMO, NI, FG |
| 2/ All Sorghum GRS, NI, GR | 7/ Alfalfa, NI, FG |
| 3/ All Corn YEL, NI, GR | 8/ Sorghum Forage Cane, NI, FG |
| 4/ All Soybeans COM, NI, GR | 9/ Cotton, NI, GR |
| 5/ Grass NAG, NI, GZ | |

2023 Program Year

Map Created November 20, 2022

Farm **4417**

Tract **4343**

Tract Cropland Total: 71.13 acres

10-23-13

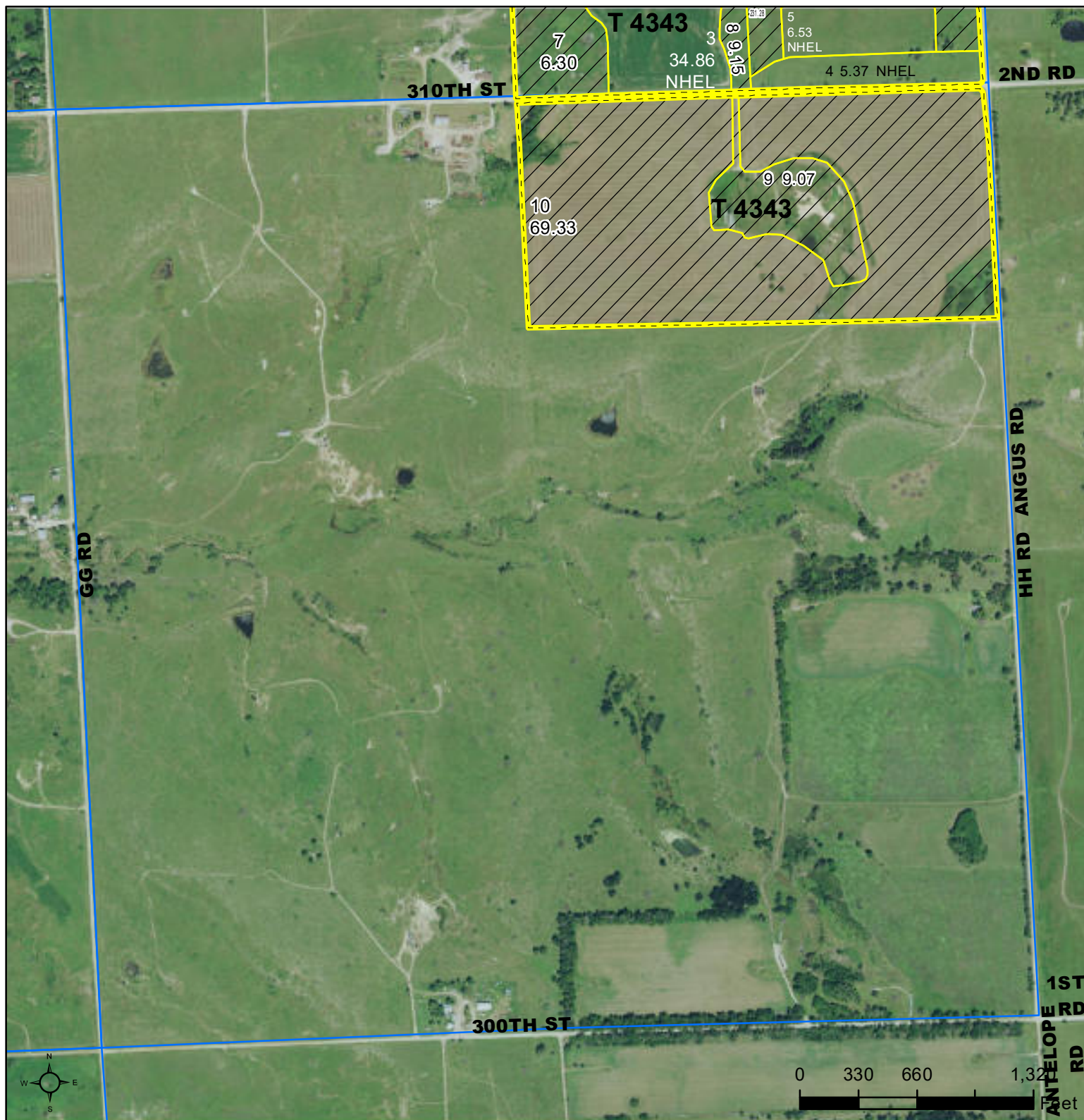
Displayed over 2021 NAIP

United States Department of Agriculture (USDA) Farm Service Agency (FSA) maps are for FSA Program administration only. This map does not represent a legal survey or reflect actual ownership; rather it depicts the information provided directly from the producer and/or National Agricultural Imagery Program (NAIP) imagery. The producer accepts the data 'as is' and assumes all risks associated with its use. USDA-FSA assumes no responsibility for actual or consequential damage incurred as a result of any user's reliance on this data outside FSA Programs. Wetland identifiers do not represent the size, shape, or specific determination of the area. Refer to your original determination (CPA-026 and attached maps) for exact boundaries and determinations or contact USDA Natural Resources Conservation Service (NRCS).



United States
Department of
Agriculture

Greenwood County, Kansas



Common Land Unit

- Non-Cropland
- Cropland

Wetland Determination Identifiers

- Restricted Use
- Limited Restrictions
- Exempt from Conservation Compliance Provisions

- Tract Boundary
- PLSS

Unless noted on field:

- | | |
|-----------------------------|--------------------------------|
| 1/ All Wheat HRW, NI, GR | 6/ Grass SMO, NI, FG |
| 2/ All Sorghum GRS, NI, GR | 7/ Alfalfa, NI, FG |
| 3/ All Corn YEL, NI GR | 8/ Sorghum Forage Cane, NI, FG |
| 4/ All Soybeans COM, NI, GR | 9/ Cotton, NI, GR |
| 5/ Grass NAG, NI, GZ | |

Tract Cropland Total: 71.13 acres

2023 Program Year

Map Created November 20, 2022

Farm 4417

Tract 4343

15-23-13

Displayed over 2021 NAIP

United States Department of Agriculture (USDA) Farm Service Agency (FSA) maps are for FSA Program administration only. This map does not represent a legal survey or reflect actual ownership; rather it depicts the information provided directly from the producer and/or National Agricultural Imagery Program (NAIP) imagery. The producer accepts the data 'as is' and assumes all risks associated with its use. USDA-FSA assumes no responsibility for actual or consequential damage incurred as a result of any user's reliance on this data outside FSA Programs. Wetland identifiers do not represent the size, shape, or specific determination of the area. Refer to your original determination (CPA-026 and attached maps) for exact boundaries and determinations or contact USDA Natural Resources Conservation Service (NRCS).