

United States Department of Agriculture
Farm Service Agency

Coffey County, KS

Farm: 5219

Tract: 5889

Name
Share
Crop
Plant Date

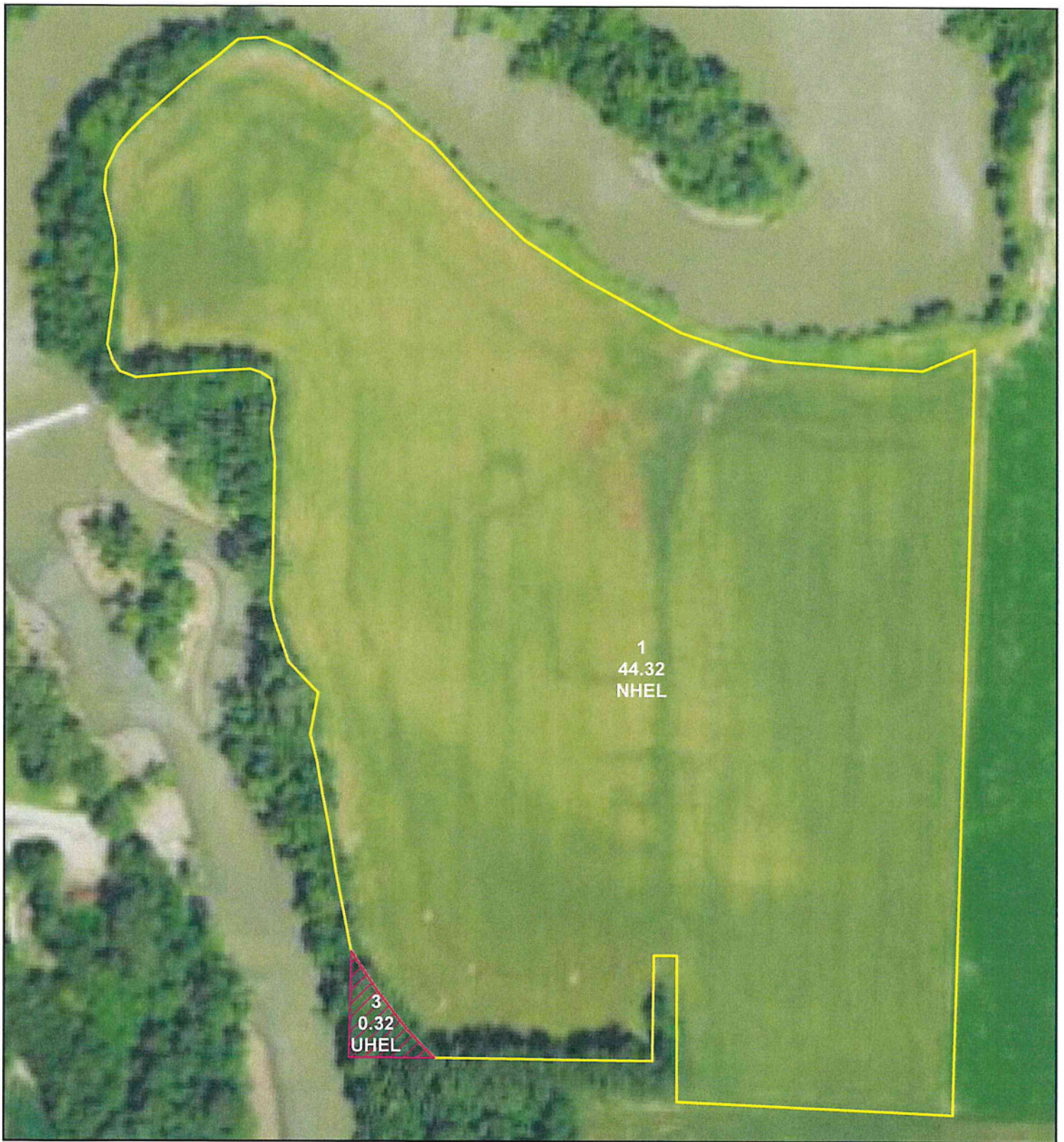
Disclaimer: Wetland identifiers do not represent the size, shape or specific determination of the area. Refer to your original determination (CPA-026 and attached maps) for exact wetland boundaries and determinations, or contact NRCS.

2023 Crop Year

March 28, 2023

Corn/C=Corn YEL GR
Sorgh/M=Sorghum GRS GR
Soy/B/SB=Soybeans COM GR
DC Soy/B/SB=Soybeans COM GR, 2nd crop
Sorg F/SF=Forage Sorghum CAN FG
SMO HY=Grass SMO FG
SMO LS=Grass SMO LS
SMO GZ=Grass SMO GZ
FES HY=Grass FTA FG
FES LS=Grass FTA LS
FES GZ=Grass FTA GZ
NAT HY=Grass NAG FG
NAT LS=Grass NAG LS
NAT GZ=Grass NAG GZ
ALF- Alfalfa, FG CLOV- Clover, Red, FG
*all fields NI, unless noted





United States Department of Agriculture
Farm Service Agency

Coffey County, KS

Farm: 5219

Tract: 3250

Name

Share

Crop

Plant Date

Disclaimer: Wetland identifiers do not represent the size, shape or specific determination of the area. Refer to your original determination (CPA-026 and attached maps) for exact wetland boundaries and determinations, or contact NRCS.

2023 Crop Year

March 28, 2023

Corn/C=Corn YEL GR
Sorgh/M=Sorghum GRS GR
Soy/B/SB=Soybeans COM GR
DC Soy/B/SB=Soybeans COM GR, 2nd crop
Sorg F/SF=Forage Sorghum CAN FG
SMO HY=Grass SMO FG
SMO LS=Grass SMO LS
SMO GZ=Grass SMO GZ
FES HY=Grass FTA FG
FES LS=Grass FTA LS
FES GZ=Grass FTA GZ
NAT HY=Grass NAG FG
NAT LS=Grass NAG LS
NAT GZ=Grass NAG GZ
ALF- Alfalfa, FG CLOV- Clover, Red, FG
*all fields NI, unless noted

