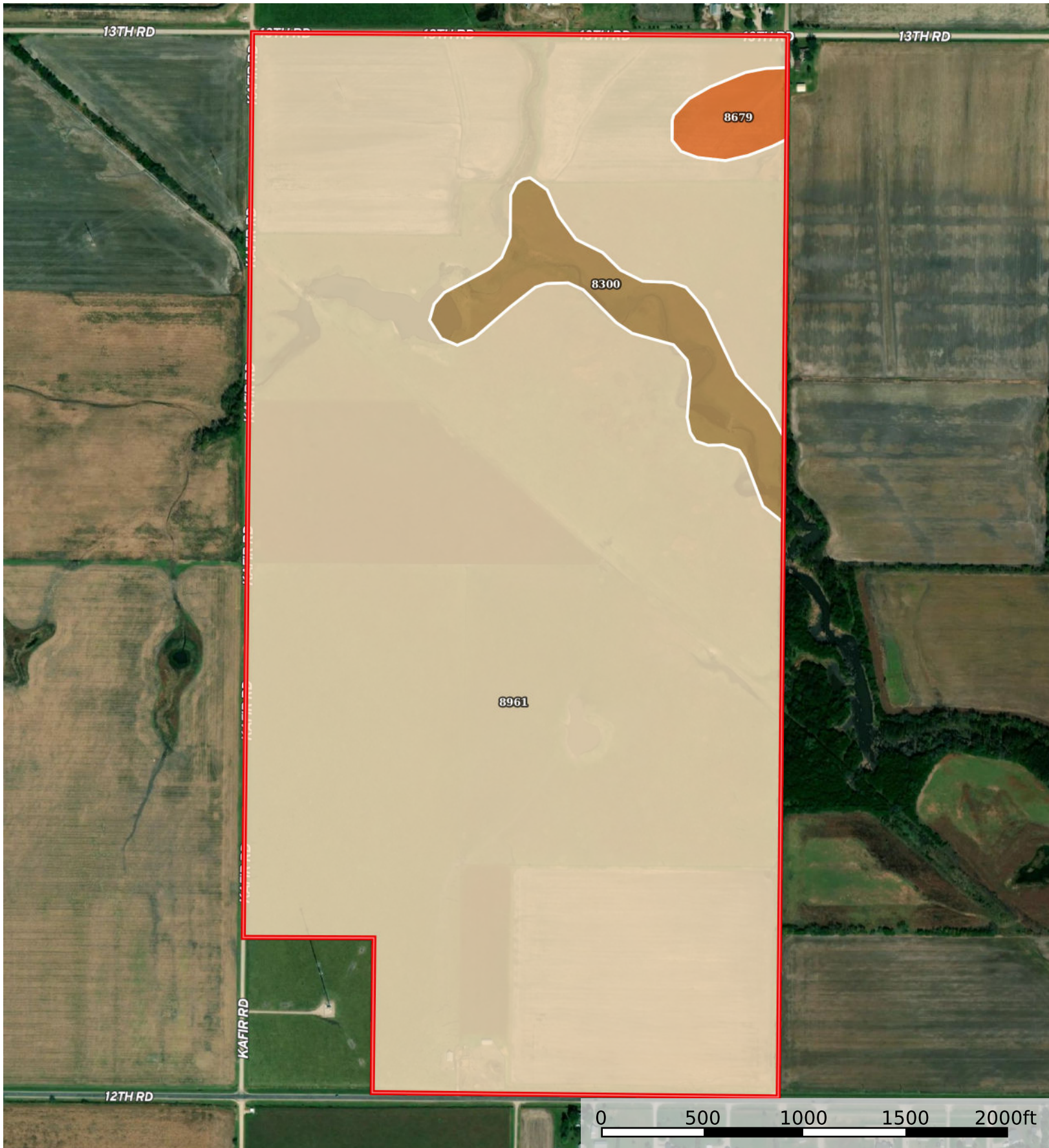



# Holloway 307

Coffey County, Kansas, 307 AC +/-



Boundary

|  Boundary 306.81 ac

| SOIL CODE | SOIL DESCRIPTION  | ACRES     | %     | CPI | NCCPI | CAP  |
|-----------|---|-----------|-------|-----|-------|------|
| 8961      | Woodson silt loam, 0 to 1 percent slopes                                  | 287.45    | 93.69 | 0   | 51    | 2s   |
| 8300      | Verdigris silt loam, channeled, 0 to 2 percent slopes, frequently flooded | 14.79     | 4.82  | 0   | 50    | 5w   |
| 8679      | Dennis silt loam, 1 to 3 percent slopes                                   | 4.57      | 1.49  | 0   | 81    | 2e   |
| TOTALS    |   | 306.81(*) | 100%  | -   | 51.4  | 2.14 |









(\*) Total acres may differ in the second decimal compared to the sum of each acreage soil. This is due to a round error because we only show the acres of each soil with two decimal.

### Capability Legend

Increased Limitations and Hazards

Decreased Adaptability and Freedom of Choice Users

Land, Capability

|              |  |  |  |  |  |  |  |  |
|--------------|---|---|---|---|--|---|---|---|
|              | 1   | 2   | 3   | 4   | 5  | 6   | 7   | 8   |
| 'Wild Life'  | •   | •   | •   | •   | •  | •   | •   | •   |
| Forestry     | •   | •   | •   | •   | •  | •   | •   |   |
| Limited      | •   | •   | •   | •   | •  | •   | •   |   |
| Moderate     | •   | •   | •   | •   | •  | •   |   |   |
| Intense      | •   | •   | •   | •   | •  |   |   |   |
| Limited      | •   | •   | •   | •   |  |   |   |   |
| Moderate     | •   | •   | •   |   |  |   |   |   |
| Intense      | •   | •   |   |   |  |   |   |   |
| Very Intense | •   |   |   |   |  |   |   |   |

### Grazing Cultivation

(c) climatic limitations (e) susceptibility to erosion

(s) soil limitations within the rooting zone (w) excess of water