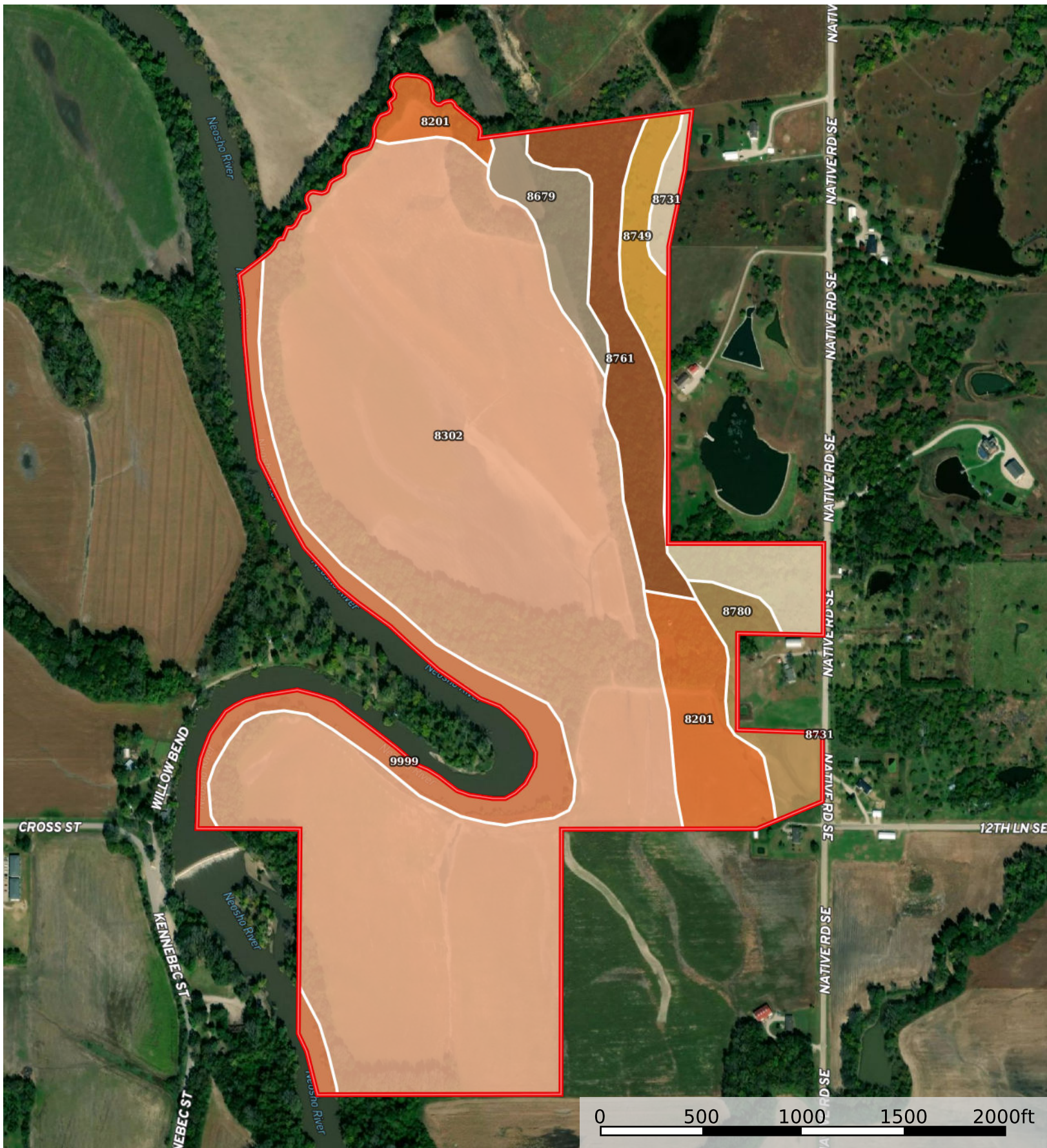


# Garrett's River Bend Tract 3

Coffey County, Kansas, 205 AC +/-



Boundary

Boundary 204.81 ac

SOIL CODE	SOIL DESCRIPTION	ACRES	%	CPI	NCCPI	CAP
8302	Verdigris silt loam, 0 to 1 percent slopes, occasionally flooded	142.55	69.6	0	87	2w
9999	Water	14.57	7.11	0	-	-
8201	Osage silty clay loam, 0 to 1 percent slopes, occasionally flooded	12.37	6.04	0	43	2w
8761	Eram-Shidler complex, 4 to 15 percent slopes	12.26	5.99	0	46	6e
8731	Eram silt loam, 3 to 7 percent slopes	6.96	3.4	0	51	4e
8679	Dennis silt loam, 1 to 3 percent slopes	6.12	2.99	0	81	2e
8780	Kenoma-Olpe complex, 3 to 7 percent slopes	5.01	2.45	0	57	3e
8749	Eram-Collinsville complex, 5 to 15 percent slopes	4.97	2.43	0	41	6e
TOTALS		204.81(*)	100%	-	72.45	2.46

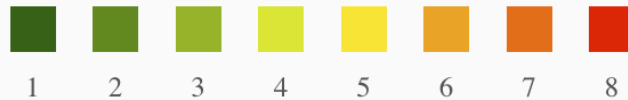
(\*) Total acres may differ in the second decimal compared to the sum of each acreage soil. This is due to a round error because we only show the acres of each soil with two decimal.

### Capability Legend

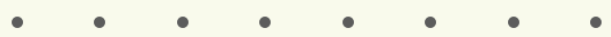
Increased Limitations and Hazards

Decreased Adaptability and Freedom of Choice Users

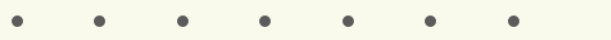
Land, Capability



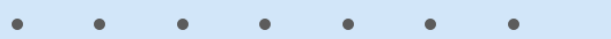
'Wild Life'



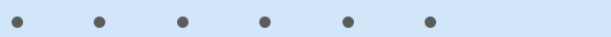
Forestry



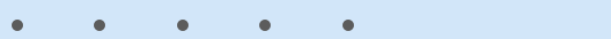
Limited



Moderate



Intense



Limited



Moderate



Intense



Very Intense



### Grazing Cultivation

(c) climatic limitations (e) susceptibility to erosion

(s) soil limitations within the rooting zone (w) excess of water