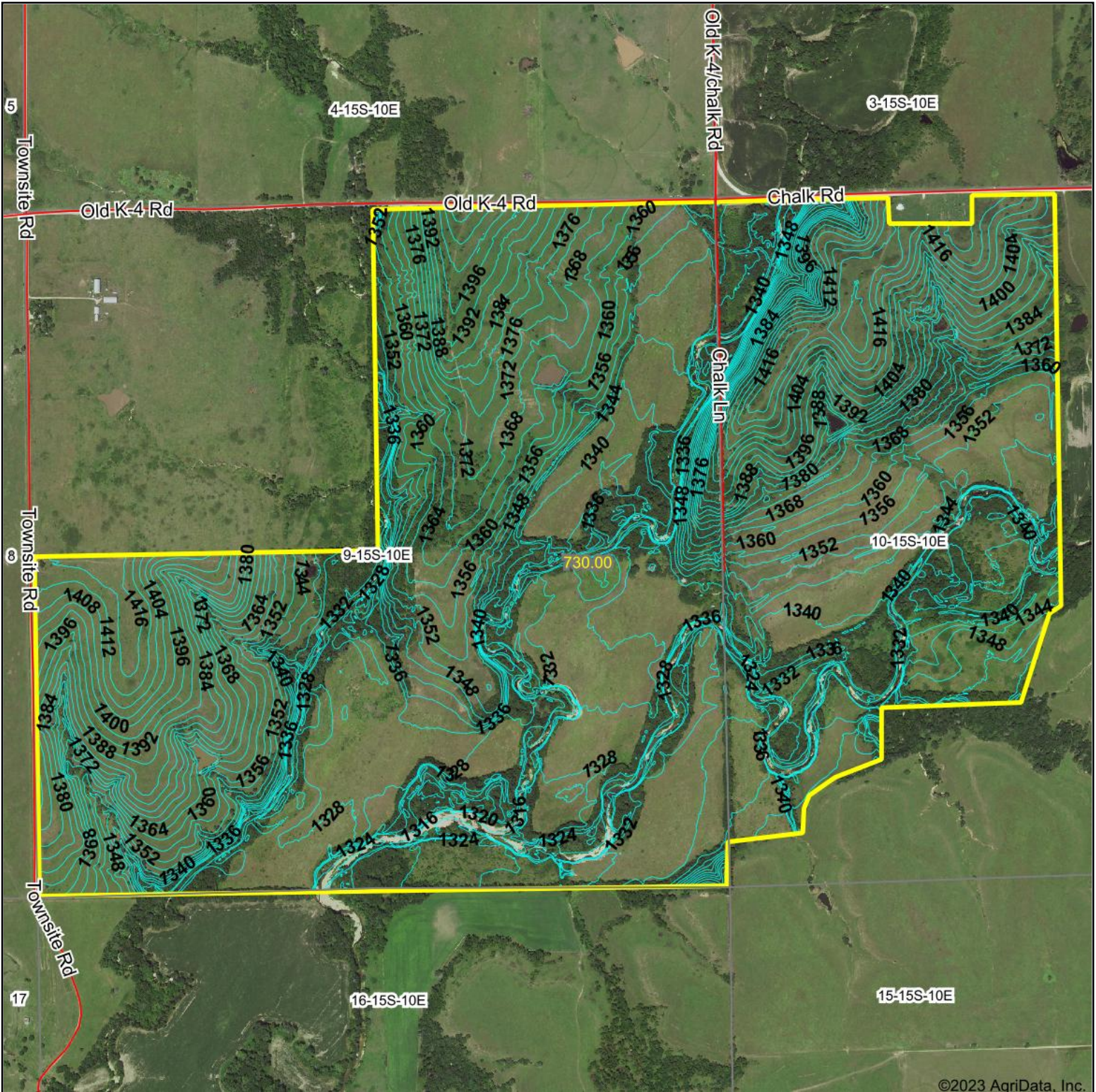


Topography Contours



©2023 AgriData, Inc.

Source: USGS 3 meter dem

Interval(ft): 4.0

Min: 1,309.4

Max: 1,426.7

Range: 117.3

Average: 1,356.7

Standard Deviation: 27.13 ft



11/20/2023

9-15S-10E
Wabaunsee County
Kansas

Boundary Center: 38.760683, -96.302709

Maps Provided By:



© AgriData, Inc. 2023

www.AgriDataInc.com