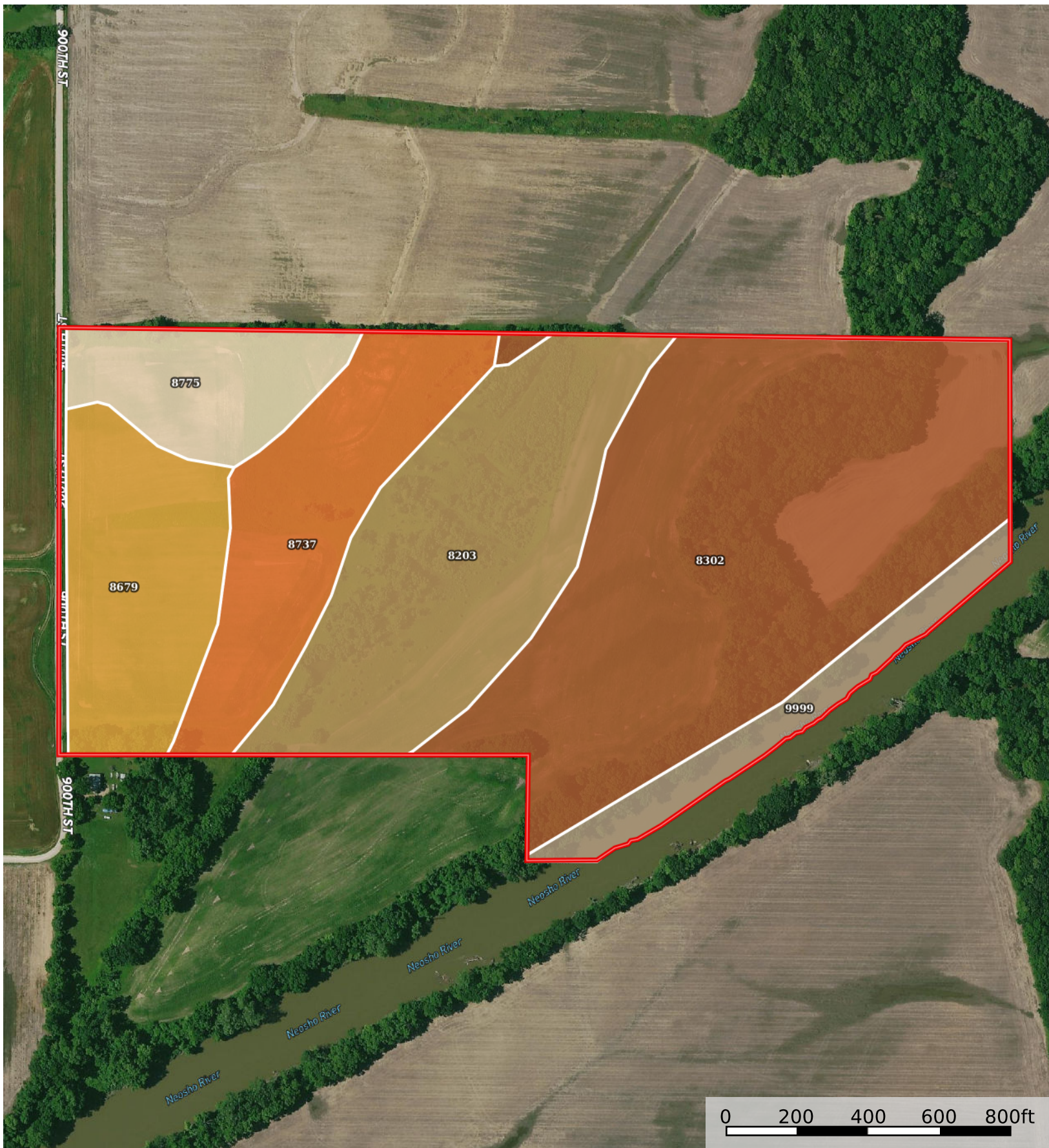


Hotel Juliet Tract 1

Allen County, Kansas, 71 AC +/-



Boundary

|  Boundary 70.82 ac

SOIL CODE	SOIL DESCRIPTION	ACRES	%	CPI	NCCPI	CAP
8302	Verdigris silt loam, 0 to 1 percent slopes, occasionally flooded	28.9	40.81	0	87	2w
8203	Osage silty clay, 0 to 1 percent slopes, occasionally flooded	15.26	21.55	0	41	3w
8737	Eram silty clay loam, 3 to 7 percent slopes, eroded	9.26	13.08	0	43	4e
8679	Dennis silt loam, 1 to 3 percent slopes	8.5	12.0	0	81	2e
8775	Kenoma silt loam, 1 to 3 percent slopes	5.12	7.23	0	59	3e
9999	Water	3.78	5.34	0	-	-
TOTALS		70.82(*)	100%	-	63.96	2.58

(*) Total acres may differ in the second decimal compared to the sum of each acreage soil. This is due to a round error because we only show the acres of each soil with two decimal.

