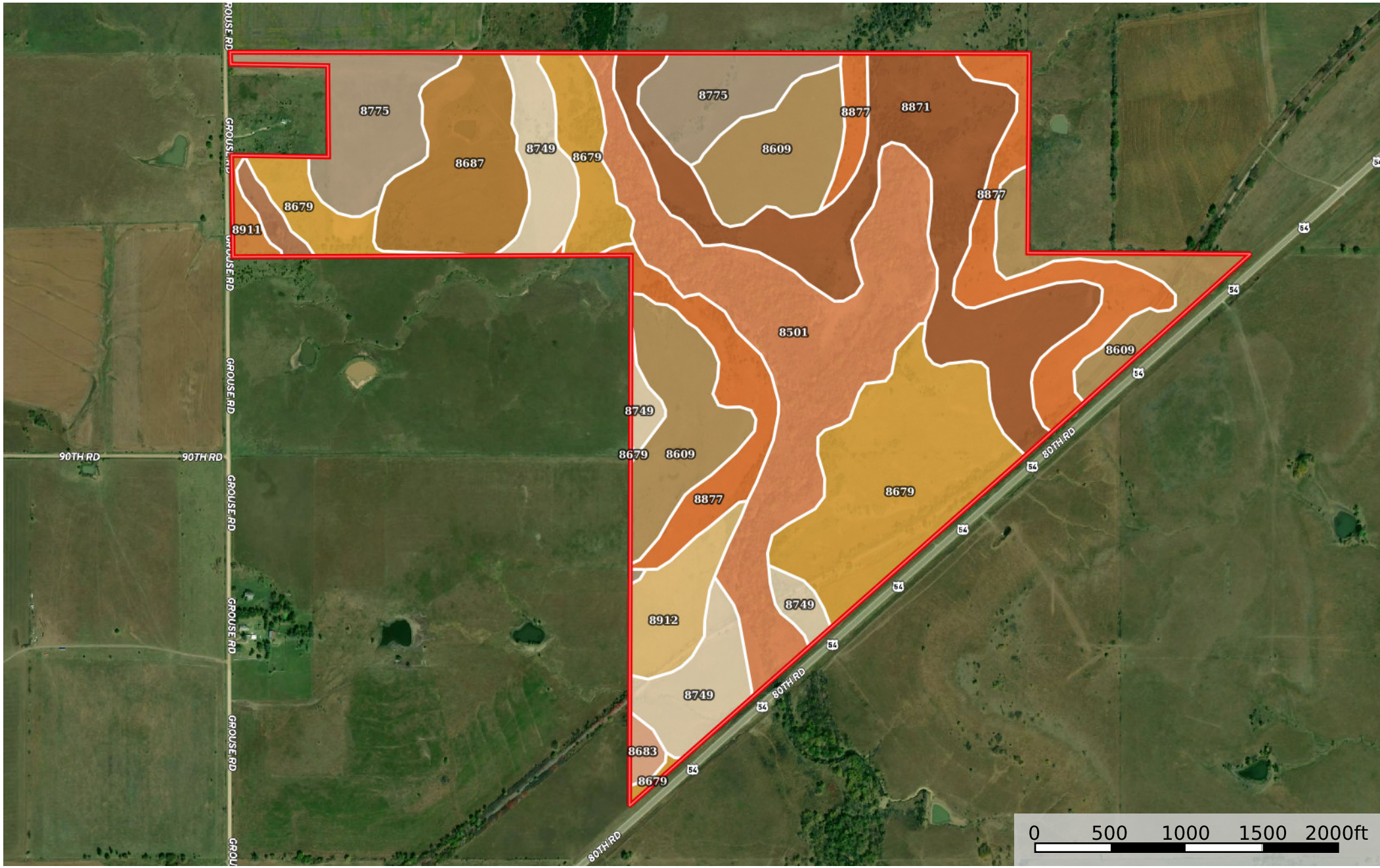


McCane and DeLay Tract 1

Woodson County, Kansas, 324 AC +/-



 Boundary

|  Boundary 322.96 ac

SOIL CODE	SOIL DESCRIPTION	ACRES	%	CPI	NCCPI	CAP
8501	Mason silt loam, 0 to 1 percent slopes, rarely flooded	53.93	16.7	0	78	1
8679	Dennis silt loam, 1 to 3 percent slopes	52.18	16.16	0	81	2e
8871	Ringo silty clay loam, 3 to 8 percent slopes	48.71	15.08	0	29	3e
8609	Aliceville silty clay loam, 1 to 3 percent slopes	43.23	13.39	0	62	2e
8877	Ringo-Sogn complex, 5 to 15 percent slopes	34.57	10.7	0	30	6e
8775	Kenoma silt loam, 1 to 3 percent slopes	28.65	8.87	0	59	3e
8749	Eram-Collinsville complex, 5 to 15 percent slopes	24.12	7.47	0	41	6e
8687	Dennis silty clay loam, 1 to 3 percent slopes, eroded	21.55	6.67	0	61	3e
8912	Summit silty clay loam, 3 to 7 percent slopes	9.72	3.01	0	68	3e
8300	Verdigris silt loam, channeled, 0 to 2 percent slopes, frequently flooded	2.37	0.73	0	50	5w
8911	Summit silty clay loam, 1 to 3 percent slopes	2.15	0.67	0	62	2e
8683	Dennis silt loam, 3 to 7 percent slopes	1.78	0.55	0	77	3e
TOTALS		322.96(*)	100%	-	57.61	2.92









(*) Total acres may differ in the second decimal compared to the sum of each acreage soil. This is due to a round error because we only show the acres of each soil with two decimal.

Capability Legend

Increased Limitations and Hazards

Decreased Adaptability and Freedom of Choice Users

Land, Capability

								
	1	2	3	4	5	6	7	8
'Wild Life'	•	•	•	•	•	•	•	•
Forestry	•	•	•	•	•	•	•	
Limited	•	•	•	•	•	•	•	
Moderate	•	•	•	•	•	•		
Intense	•	•	•	•	•			
Limited	•	•	•	•				
Moderate	•	•	•					
Intense	•	•						
Very Intense	•							

Grazing Cultivation

(c) climatic limitations (e) susceptibility to erosion

(s) soil limitations within the rooting zone (w) excess of water