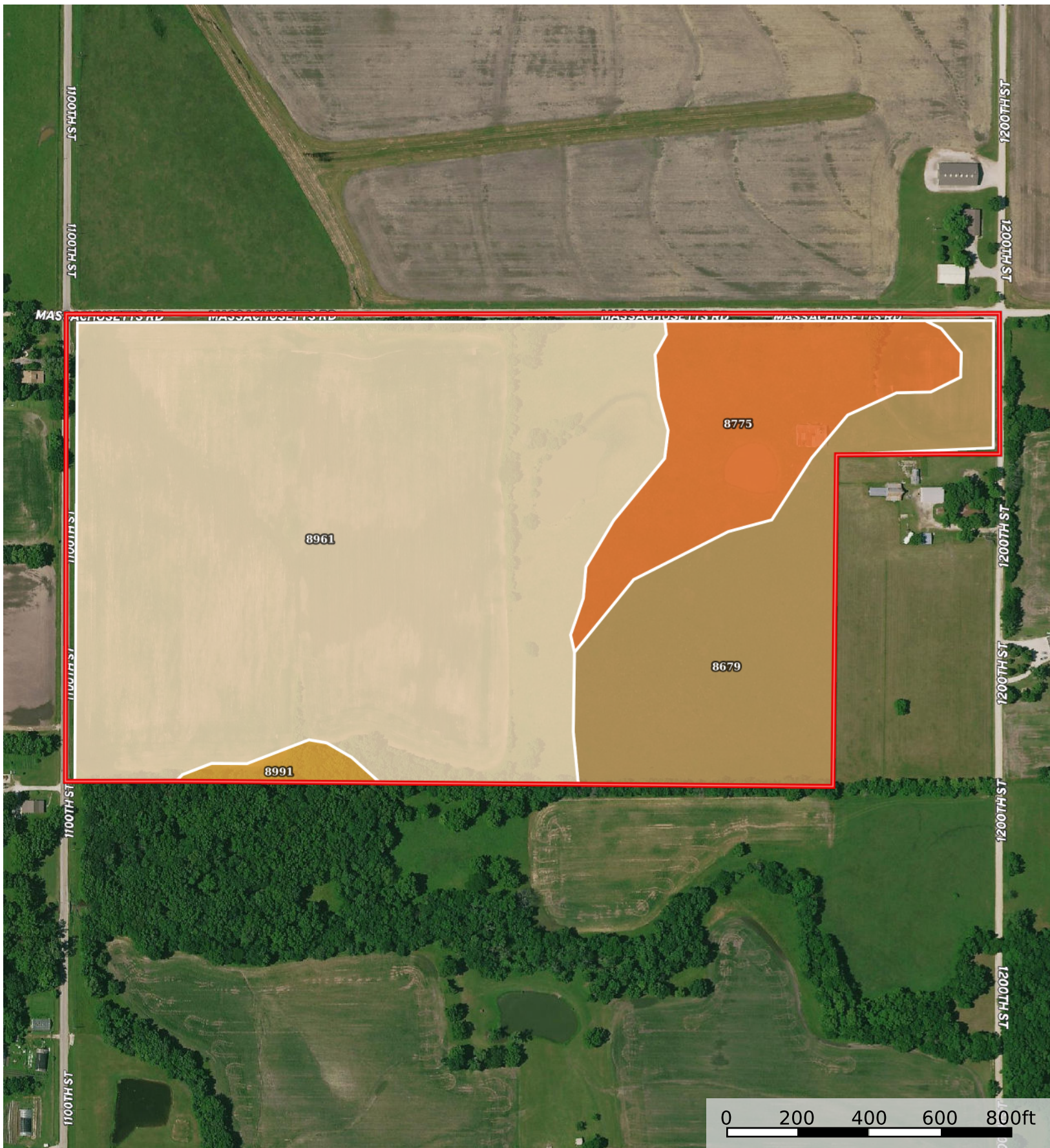


Hotel Juliet Tract 3

Allen County, Kansas, 70 AC +/-



Boundary

|  Boundary 67.14 ac

SOIL CODE	SOIL DESCRIPTION	ACRES	%	CPI	NCCPI	CAP
8961	Woodson silt loam, 0 to 1 percent slopes	43.83	65.28	0	52	2s
8679	Dennis silt loam, 1 to 3 percent slopes	13.43	20.0	0	81	2e
8775	Kenoma silt loam, 1 to 3 percent slopes	9.01	13.42	0	59	3e
8991	Zaar silty clay, 1 to 3 percent slopes	0.87	1.3	0	51	3e
TOTALS		67.14(*)	100%	-	58.73	2.15

(*) Total acres may differ in the second decimal compared to the sum of each acreage soil. This is due to a round error because we only show the acres of each soil with two decimal.

Capability Legend

Increased Limitations and Hazards
Decreased Adaptability and Freedom of Choice Users

Land, Capability

	1	2	3	4	5	6	7	8
'Wild Life'	•	•	•	•	•	•	•	•
Forestry	•	•	•	•	•	•	•	
Limited	•	•	•	•	•	•	•	
Moderate	•	•	•	•	•	•		
Intense	•	•	•	•	•			
Limited	•	•	•	•				
Moderate	•	•	•					
Intense	•	•						
Very Intense	•							

Grazing Cultivation

(c) climatic limitations (e) susceptibility to erosion
(s) soil limitations within the rooting zone (w) excess of water