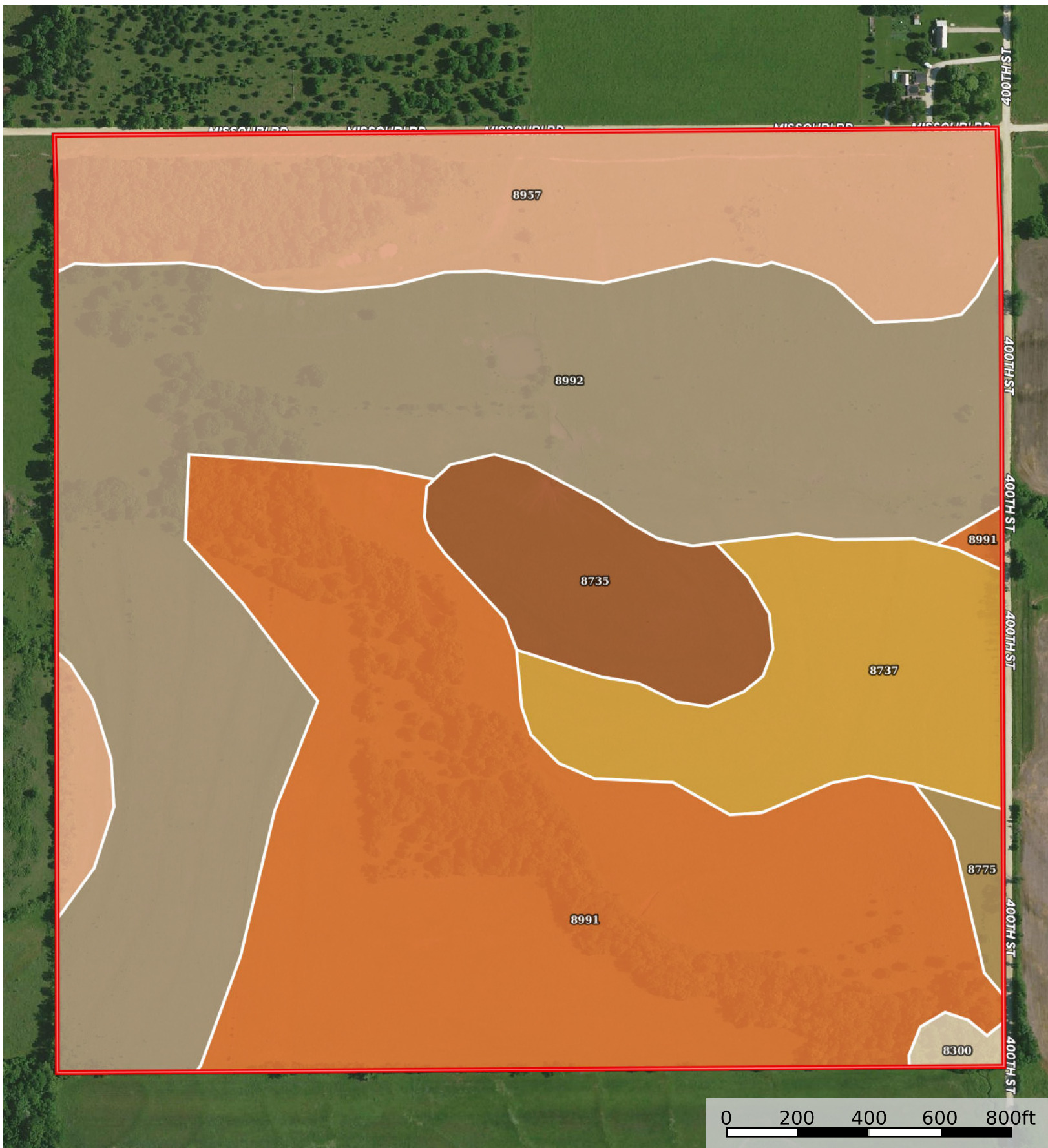


Hotel Juliet Tract 5

Allen County, Kansas, 160 AC +/-



 Boundary

Boundary 160.38 ac

SOIL CODE	SOIL DESCRIPTION	ACRES	%	CPI	NCCPI	CAP
8992	Zaar silty clay, 3 to 8 percent slopes	55.92	34.87	0	47	4e
8991	Zaar silty clay, 1 to 3 percent slopes	50.76	31.65	0	47	3e
8957	Wagstaff-Shidler complex, 1 to 8 percent slopes	27.16	16.94	0	37	3e
8737	Eram silty clay loam, 3 to 7 percent slopes, eroded	15.26	9.52	0	42	4e
8735	Eram silty clay loam, 3 to 7 percent slopes	9.2	5.74	0	58	4e
8775	Kenoma silt loam, 1 to 3 percent slopes	1.36	0.85	0	59	3e
8300	Verdigris silt loam, channeled, 0 to 2 percent slopes, frequently flooded	0.72	0.45	0	50	5w
TOTALS		160.38(*)	100%	-	45.58	3.51

(*) Total acres may differ in the second decimal compared to the sum of each acreage soil. This is due to a round error because we only show the acres of each soil with two decimal.

