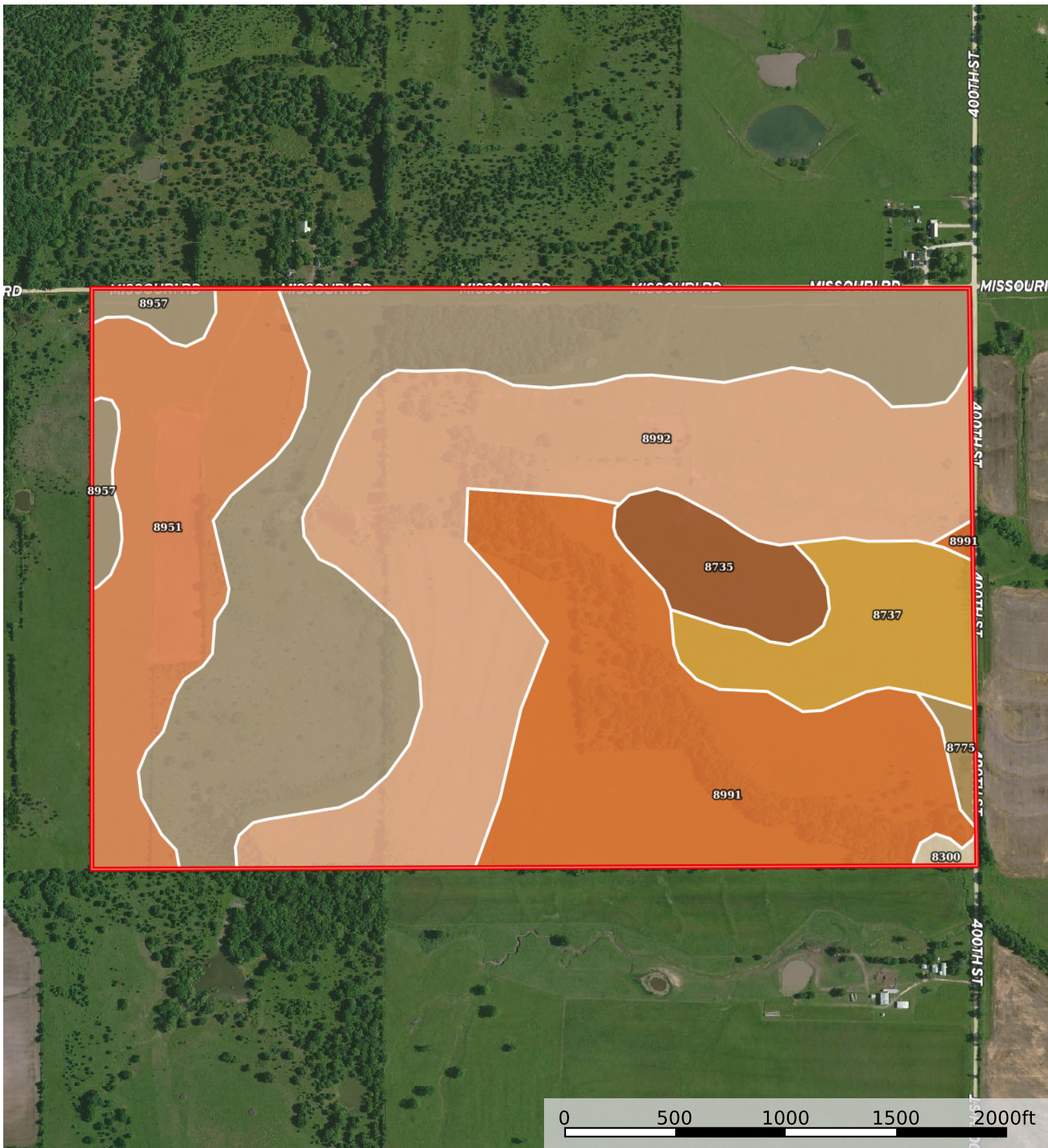


Hotel Juliet Tract 8

Allen County, Kansas, 240 AC +/-



 Boundary

|  Boundary 240.86 ac

SOIL CODE	SOIL DESCRIPTION	ACRES	%	CPI	NCCPI	CAP
8957	Wagstaff-Shidler complex, 1 to 8 percent slopes	66.69	27.69	0	37	3e
8992	Zaar silty clay, 3 to 8 percent slopes	65.35	27.13	0	47	4e
8991	Zaar silty clay, 1 to 3 percent slopes	50.3	20.88	0	47	3e
8951	Wagstaff silty clay loam, 1 to 3 percent slopes	31.61	13.12	0	52	3e
8737	Eram silty clay loam, 3 to 7 percent slopes, eroded	15.42	6.4	0	42	4e
8735	Eram silty clay loam, 3 to 7 percent slopes	9.2	3.82	0	58	4e
8775	Kenoma silt loam, 1 to 3 percent slopes	1.56	0.65	0	59	3e
8300	Verdigris silt loam, channeled, 0 to 2 percent slopes, frequently flooded	0.73	0.3	0	50	5w
TOTALS		240.86(*)	100%	-	45.07	3.38

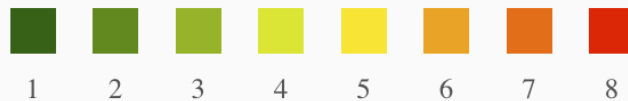
(*) Total acres may differ in the second decimal compared to the sum of each acreage soil. This is due to a round error because we only show the acres of each soil with two decimal.

Capability Legend

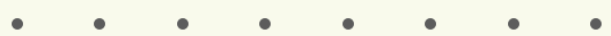
Increased Limitations and Hazards

Decreased Adaptability and Freedom of Choice Users

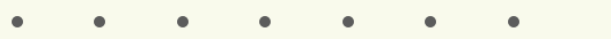
Land, Capability



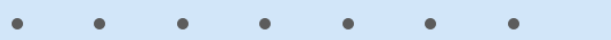
'Wild Life'



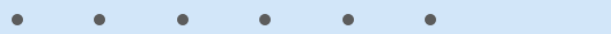
Forestry



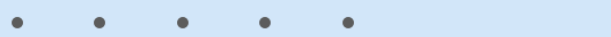
Limited



Moderate



Intense



Limited



Moderate



Intense



Very Intense



Grazing Cultivation

(c) climatic limitations (e) susceptibility to erosion

(s) soil limitations within the rooting zone (w) excess of water