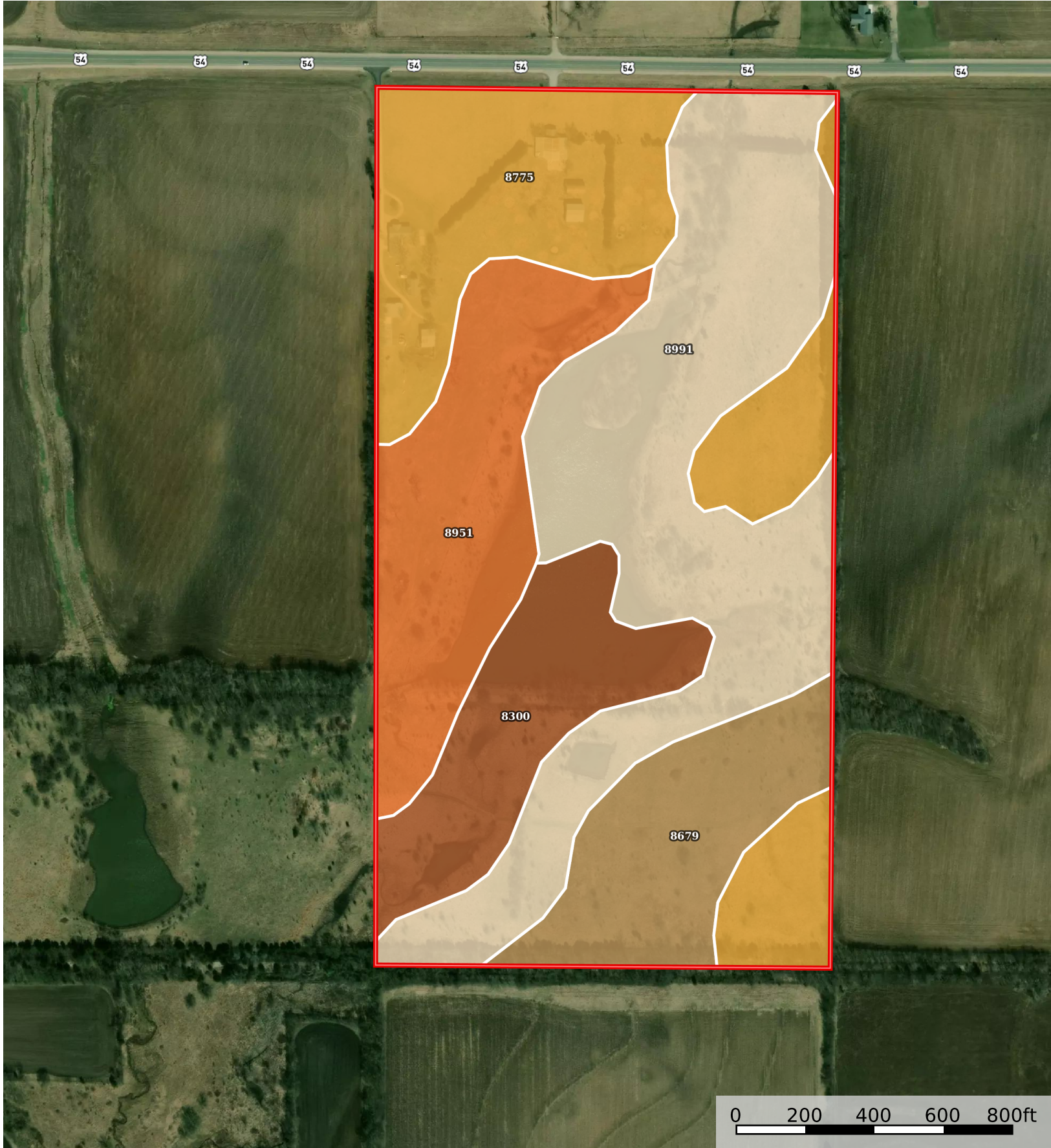



Diehl Tract 2
Allen County, Kansas, 78 AC +/-



 Boundary

|  Boundary 77.37 ac

SOIL CODE	SOIL DESCRIPTION	ACRES	%	CPI	NCCPI	CAP
8991	Zaar silty clay, 1 to 3 percent slopes	26.81	34.66	0	51	3e
8775	Kenoma silt loam, 1 to 3 percent slopes	19.25	24.88	0	59	3e
8951	Wagstaff silty clay loam, 1 to 3 percent slopes	12.92	16.7	0	52	3e
8300	Verdigris silt loam, channeled, 0 to 2 percent slopes, frequently flooded	9.26	11.97	0	50	5w
8679	Dennis silt loam, 1 to 3 percent slopes	9.13	11.8	0	81	2e
TOTALS		77.37(*)	100%	-	56.59	3.12









(*) Total acres may differ in the second decimal compared to the sum of each acreage soil. This is due to a round error because we only show the acres of each soil with two decimal.

Capability Legend

Increased Limitations and Hazards

Decreased Adaptability and Freedom of Choice Users

Land, Capability

								
	1	2	3	4	5	6	7	8
'Wild Life'	•	•	•	•	•	•	•	•
Forestry	•	•	•	•	•	•	•	
Limited	•	•	•	•	•	•	•	
Moderate	•	•	•	•	•	•		
Intense	•	•	•	•	•			
Limited	•	•	•	•				
Moderate	•	•	•					
Intense	•	•						
Very Intense	•							

Grazing Cultivation

(c) climatic limitations (e) susceptibility to erosion

(s) soil limitations within the rooting zone (w) excess of water