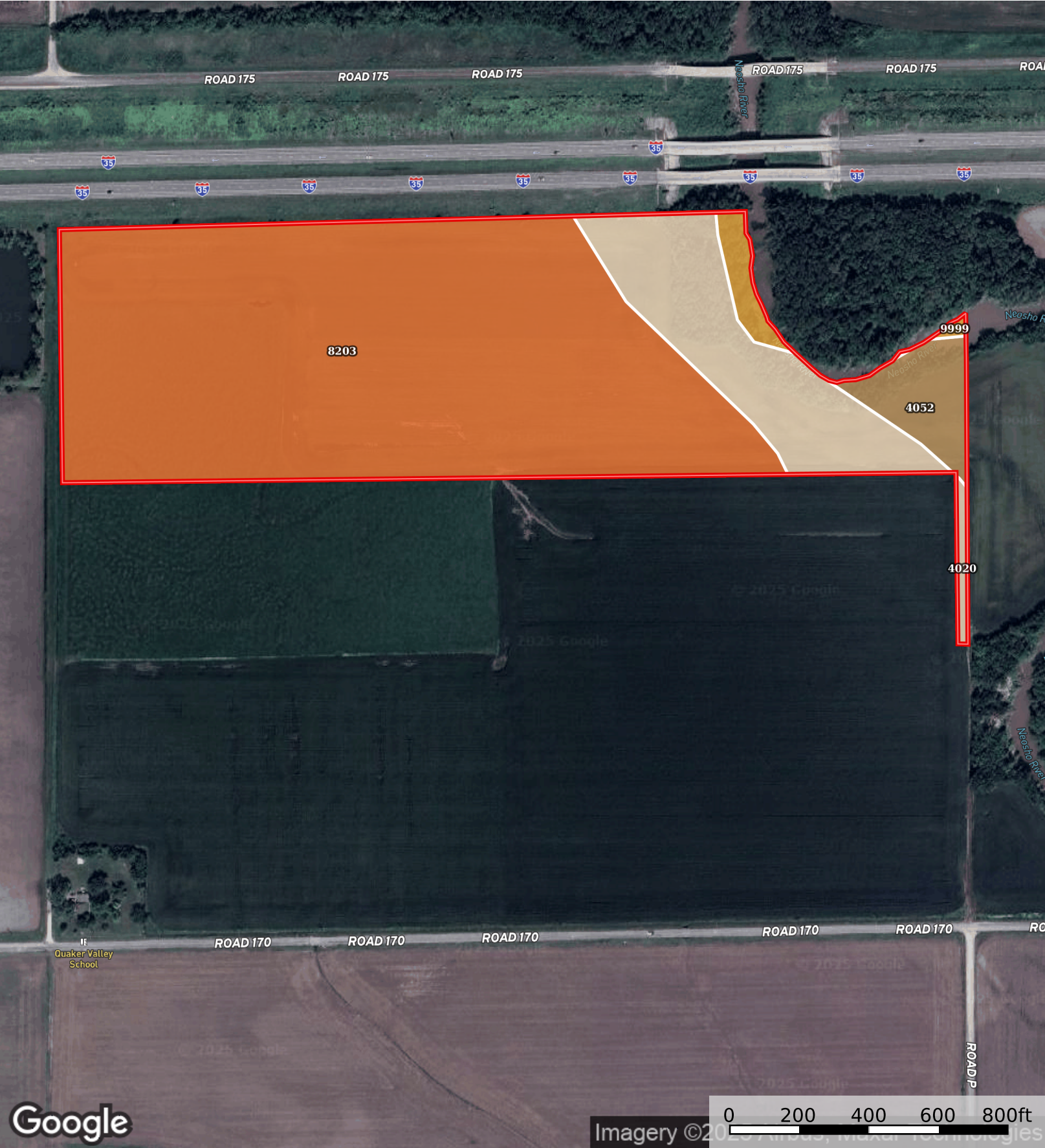


Gunkle Tract 2
Lyon County, Kansas, 40 AC +/-



Boundary

|  Boundary 39.19 ac

SOIL CODE	SOIL DESCRIPTION	ACRES	%	CPI	NCCPI	CAP
8203	Osage silty clay, 0 to 1 percent slopes, occasionally flooded	30.08	76.73	0	41	3w
4020	Chase silty clay loam, occasionally flooded	6.41	16.35	0	67	2w
4052	Ivan silt loam, occasionally flooded	1.88	4.8	0	82	2w
9999	Water	0.82	2.09	0	-	-
TOTALS		39.19(*)	100%	-	46.35	2.78









(*) Total acres may differ in the second decimal compared to the sum of each acreage soil. This is due to a round error because we only show the acres of each soil with two decimal.

Capability Legend

Increased Limitations and Hazards

Decreased Adaptability and Freedom of Choice Users

Land, Capability

								
	1	2	3	4	5	6	7	8
'Wild Life'	•	•	•	•	•	•	•	•
Forestry	•	•	•	•	•	•	•	
Limited	•	•	•	•	•	•	•	
Moderate	•	•	•	•	•	•		
Intense	•	•	•	•	•			
Limited	•	•	•	•				
Moderate	•	•	•					
Intense	•	•						
Very Intense	•							

Grazing Cultivation

(c) climatic limitations (e) susceptibility to erosion

(s) soil limitations within the rooting zone (w) excess of water