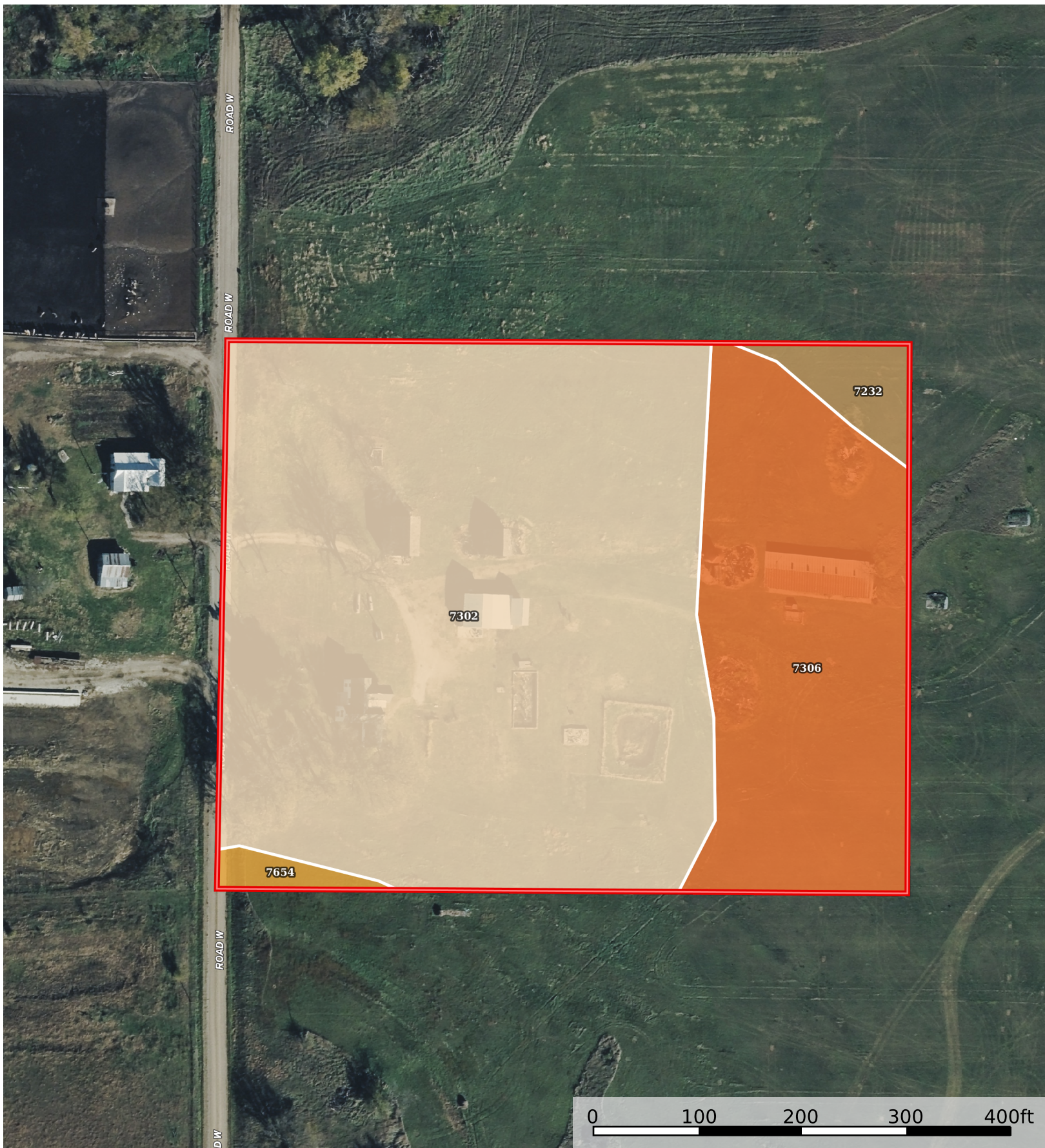


# Gardner Trust Tract 2 - Home and 8 AC

Lyon County, Kansas, 8 AC +/-



Boundary

Boundary 7.99 ac

SOIL CODE	SOIL DESCRIPTION	ACRES	%	CPI	NCCPI	CAP
7302	Martin silty clay loam, 3 to 7 percent slopes	5.52	69.17	0	53	3e
7306	Martin silty clay, 3 to 7 percent slopes, eroded	2.15	26.94	0	48	3e
7232	Elmont silt loam, 1 to 3 percent slopes	0.22	2.76	0	68	2e
7654	Vinland loam, 3 to 12 percent slopes	0.1	1.25	0	44	6e
TOTALS		7.99(*)	100%	-	52.02	3.01

(\*) Total acres may differ in the second decimal compared to the sum of each acreage soil. This is due to a round error because we only show the acres of each soil with two decimal.

### Capability Legend

Increased Limitations and Hazards

Decreased Adaptability and Freedom of Choice Users

Land, Capability

	1	2	3	4	5	6	7	8
'Wild Life'	•	•	•	•	•	•	•	•
Forestry	•	•	•	•	•	•	•	
Limited	•	•	•	•	•	•	•	
Moderate	•	•	•	•	•	•		
Intense	•	•	•	•	•			
Limited	•	•	•	•				
Moderate	•	•	•					
Intense	•	•						
Very Intense	•							

### Grazing Cultivation

(c) climatic limitations (e) susceptibility to erosion

(s) soil limitations within the rooting zone (w) excess of water