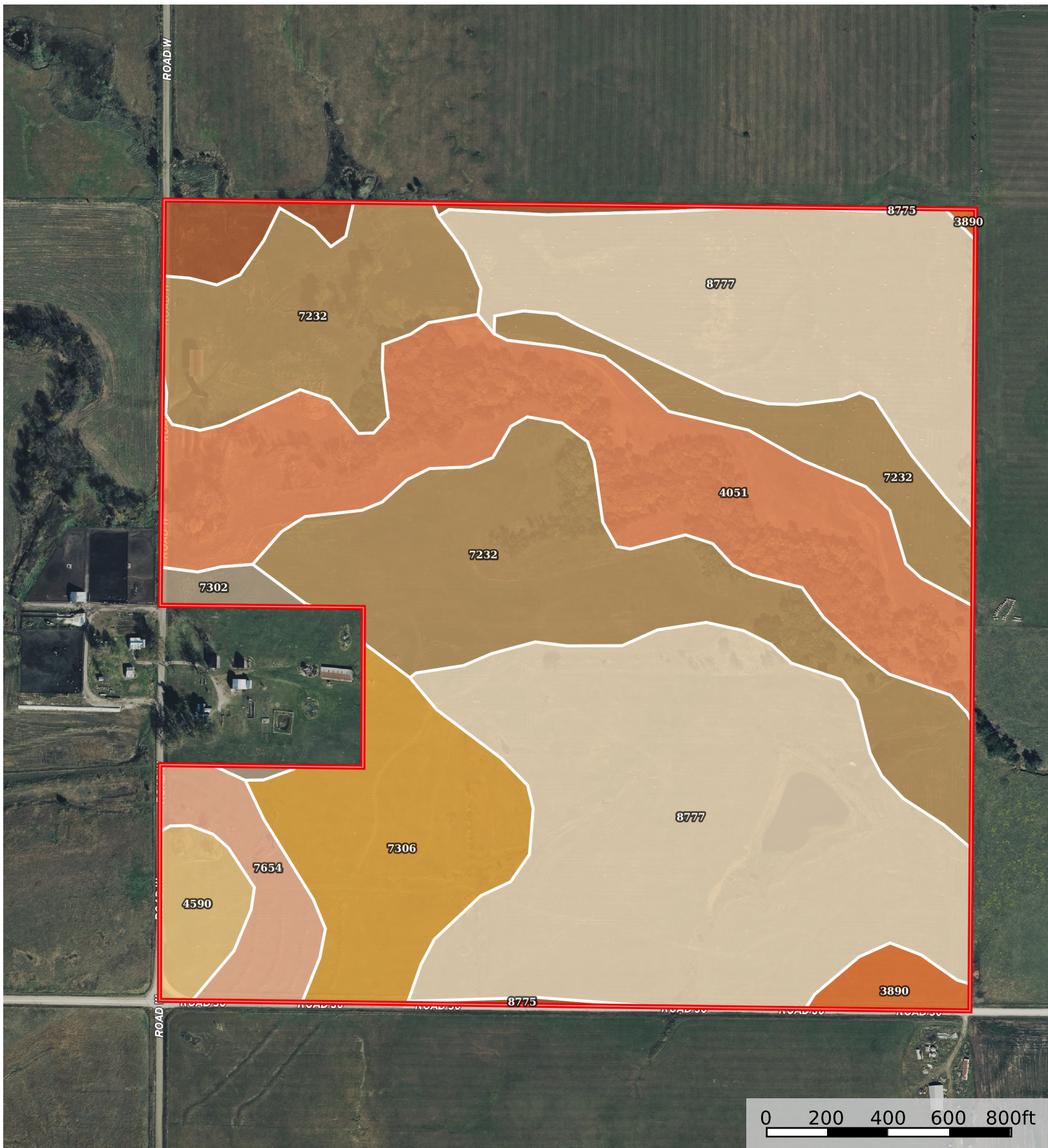


# Gardner Trust- Tract 1

Lyon County, Kansas, 152 AC +/-



 Boundary

Boundary 152.69 ac

| SOIL CODE | SOIL DESCRIPTION                                      | ACRES     | %     | CPI | NCCPI | CAP  |
|-----------|---|-----------|-------|-----|-------|------|
| 8777      | Kenoma silty clay loam, 1 to 3 percent slopes, eroded | 59.61     | 39.04 | 0   | 51    | 3e   |
| 7232      | Elmont silt loam, 1 to 3 percent slopes               | 39.67     | 25.98 | 0   | 68    | 2e   |
| 4051      | Ivan silt loam, channeled                             | 25.95     | 16.99 | 0   | 51    | 5w   |
| 7306      | Martin silty clay, 3 to 7 percent slopes, eroded      | 13.24     | 8.67  | 0   | 48    | 3e   |
| 7654      | Vinland loam, 3 to 12 percent slopes                  | 4.58      | 3.0   | 0   | 44    | 6e   |
| 8775      | Kenoma silt loam, 1 to 3 percent slopes               | 3.3       | 2.16  | 0   | 59    | 3e   |
| 4590      | Clime-Sogn complex, 3 to 20 percent slopes            | 3.1       | 2.03  | 0   | 34    | 6e   |
| 3890      | Ladysmith silty clay loam, 0 to 1 percent slopes      | 1.9       | 1.24  | 0   | 53    | 2s   |
| 7302      | Martin silty clay loam, 3 to 7 percent slopes         | 1.34      | 0.88  | 0   | 53    | 3e   |
| TOTALS    |   | 152.69(*) | 100%  | -   | 54.81 | 3.22 |

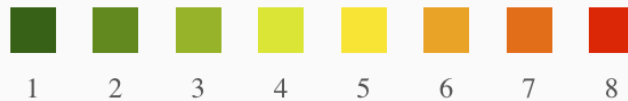
(\*) Total acres may differ in the second decimal compared to the sum of each acreage soil. This is due to a round error because we only show the acres of each soil with two decimal.

### Capability Legend

Increased Limitations and Hazards

Decreased Adaptability and Freedom of Choice Users

Land, Capability



|              |   |   |   |   |   |   |   |   |
|--------------|---|---|---|---|---|---|---|---|
| 'Wild Life'  | • | • | • | • | • | • | • | • |
| Forestry     | • | • | • | • | • | • | • |   |
| Limited      | • | • | • | • | • | • | • |   |
| Moderate     | • | • | • | • | • | • |   |   |
| Intense      | • | • | • | • | • |   |   |   |
| Limited      | • | • | • | • |   |   |   |   |
| Moderate     | • | • | • |   |   |   |   |   |
| Intense      | • | • |   |   |   |   |   |   |
| Very Intense | • |   |   |   |   |   |   |   |

### Grazing Cultivation

(c) climatic limitations (e) susceptibility to erosion

(s) soil limitations within the rooting zone (w) excess of water